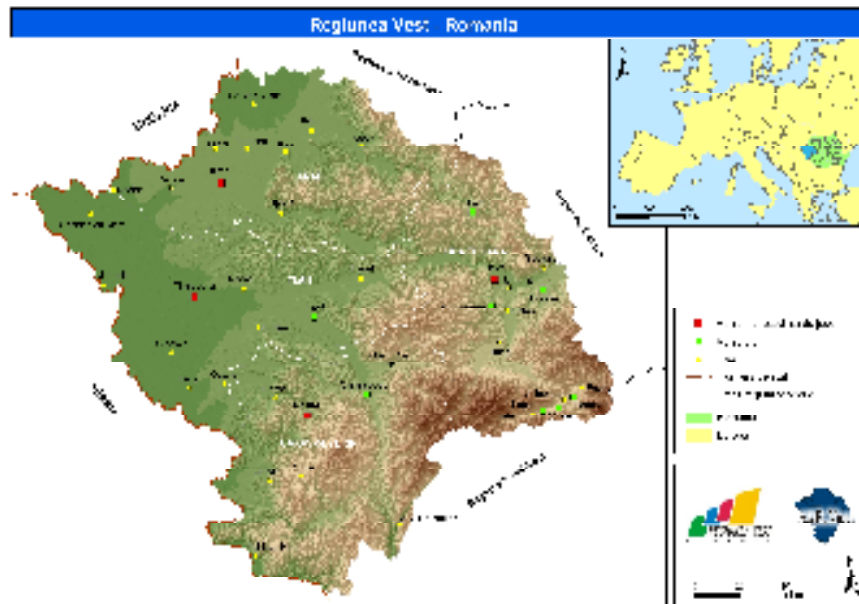


## The West Region – general features

The West Region lies in the west of Romania, at the border between Hungary and Serbia, consisting of four counties from an administrative-territorial point of view: Arad, Caraș-Severin, Hunedoara, and Timiș. The West Region has an area of 32,034 km<sup>2</sup>, accounting for 13.4% of the country's area.



Map1. West Region – General Presentation

## Population

In 2008, the West Region had a population of 1,924,488 people, accounting for 8.93% of Romania's population. The West Region has the smallest population of all the country's regions, while also being the only region with less than 2 million inhabitants. Compared with 2000, under the combined influence of the varying birthrate, the inward migratory fluxes and the intensity of the outward migration, the region's population has dropped by 100,000 inhabitants.

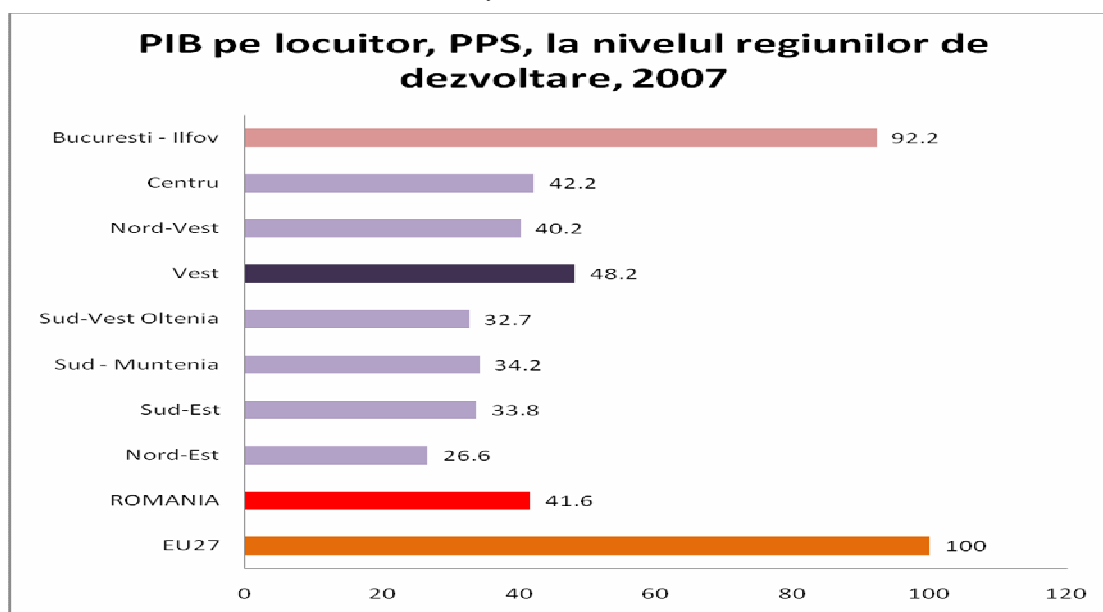
## Territorial-administrative features

From an administrative-territorial point of view, there are 322 administrative-territorial units in the West Region, which may be divided as follows: 42 cities and towns and 280 communes.

## The economic potential

The West Region is considered to be an upwardly moving region, with economic results above the national average, often second only to the Bucharest-Ilfov Region. *The GDP increase* is visible both overall in the West Region and for each of the region's counties.

Grafic 1., PPS, 2007

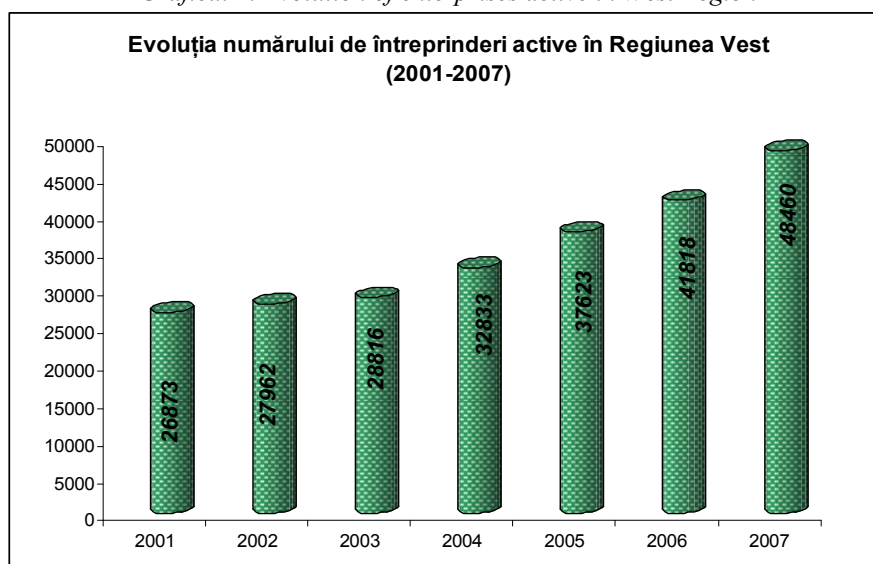


Source: Anuarul Statistic of Romania 2008, INS, 2009

## Enterprise activity

There were **48.460** enterprises operating in the West Region in 2007, with those in industry, constructions, and services accounting for 9.5% of the total number of enterprises in Romania, continuing the upward trend from the previous period.

Graficul 2. Evolution of enterprises active in West Region



As regards the distribution of the enterprises by size class, just like everywhere else in the country, microenterprises prevail in the West Region, making up over 86% of the total enterprises in the West Region.

## Workforce

According to statistics, the active population in the West Region consisted of 885,000 people in 2007. The employed population was 835,000 people that year, and the unemployed population was 50,000 people, according to the International Labour Office. Most of the employed population in all the region's counties worked in the service sector.

*Table 1. The distribution of enterprises operating in the West Region between 2005-2007*

		Enterprise type				
Year	West Region	Micro	Small	Medium	Large	Total in Romania
2005	41 818	36 223	4 294	1 077	224	442 868
2006	45 218	39 256	4 635	1 115	212	471 952
2007	48 460	42 306	4 839	1 105	210	510 140

Source: Romanian Statistical Yearbook, 2008, INS, 2009

*Table 2. Civil employed population by region and counties and by national economy activity, 2007*

	Agriculture		Industry		Constructions		Services		Total
	Total	%	Total	%	Total	%	Total	%	
Arad	47,5	22,4	68,6	32,4	10,0	4,7	85,5	40,4	211,6
Caras-Severin	42,0	34,3	27,4	22,3	7,1	5,8	46,1	37,6	122,6
Hunedoara	43,5	21,8	62,0	31,1	13,0	6,5	81,0	40,6	199,5
Timiș	74,1	22,1	92,8	27,7	20,9	6,2	147,7	44,0	335,5
<b>West Region</b>	<b>205,9</b>	<b>23,7</b>	<b>250,8</b>	<b>28,9</b>	<b>51,0</b>	<b>5,9</b>	<b>362,3</b>	<b>41,7</b>	<b>869,2</b>

## Education System

Consequence of demographic trends in recent years, characterized by decline and widening external migration, the school population at all levels has been a continuous reduction.

*Tabelul 3. Population in schools in West Region Romania 2001 /2002 – 2007 / 2008*

<b>Anul/ Regiunea</b>	<b>2001 / 2002</b>	<b>2002 / 2003</b>	<b>2003 / 2004</b>	<b>2004 / 2005</b>	<b>2005 / 2006</b>	<b>2006 / 2007</b>	<b>2007 / 2008</b>
România	4.554.466	4.496.786	4.472.493	4.403.880	4.360.831	4.345.581	4.404.581
<b>West Region</b>	<b>417.371</b>	<b>415.513</b>	<b>411.294</b>	<b>404.191</b>	<b>398.103</b>	<b>396.386</b>	<b>394.874</b>
Arad	86.821	91.538	91.686	92.042	91.550	94.812	95.055
Caraş-Severin	65.611	63.718	61.990	59.998	58.536	57.321	56.539
Hunedoara	99.578	97.529	95.661	91.754	89.659	85.415	83.760
Timiș	164.361	162.728	161.957	160.397	158.358	158.838	159.520

Sursa: Teritorial sTATIC 2007, INS, 2008